

Key Words

SubLiminal laser therapy - Subthreshold laser treatment - Easyret -
Chronic Central Serous Chorioretinopathy (CCSC) - 577nm - Yellow laser

Alejandro Filloy Rius

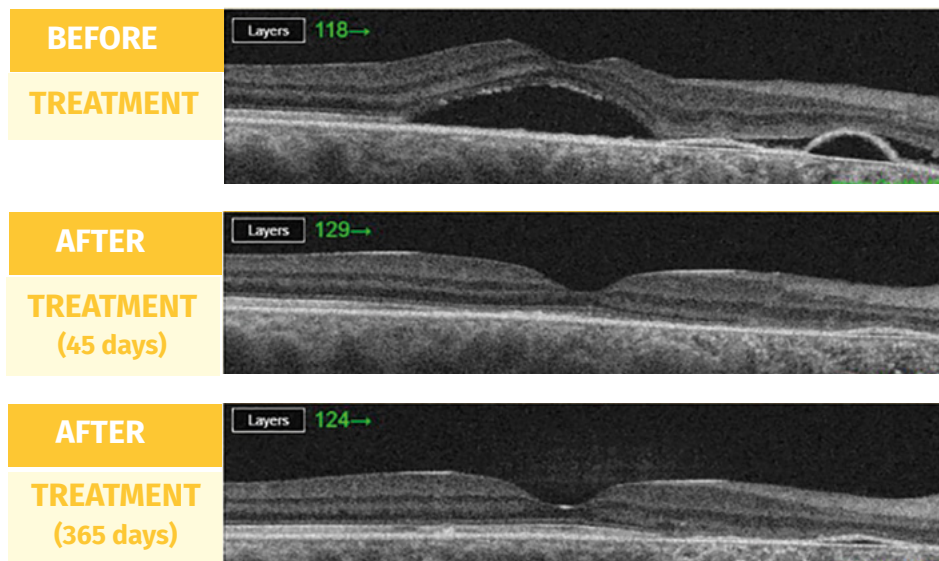
MD, Ph.D.,
Tarragona, Spain



Clinical data

49-year-old patient with a history of CCSC in his right eye treated years ago with PDT. He presents with a recurrence of his condition with VA 20/50.

Summary



The patient received Subliminal laser treatment:

⇒ 1090 spots, 160 microns, at 300mW (titrated at 850), encompassing most of the macular area, sparing the foveal area.

6 weeks after VA is 20/30 with complete SRF resolution and no visible reaction on autofluorescence.

Next follow up visit, 12 weeks after treatment: VA 20/25.

Final follow up visit, 12 months after treatment: VA 20/22, with a progressively more reconstituted outer retina.

Conclusion:

Subliminal laser therapy was fully effective to resolve this CCSC recurrence in a context of unavailability of PDT.

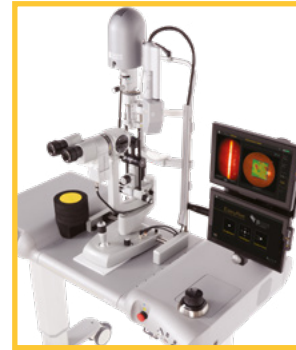
Discover the 4 steps of SubLiminal laser therapy



Discover the 4 steps of SubLiminal laser therapy:

1 Laser settings

- Wavelength: 577
 - Duty Cycle: 5%
 - Pulse duration: 200 ms
 - Spot size: 100-200 μm
 - Power: Determined by titration (not over 600mW)
 - Spacing between spots: no
 - Titration: yes
 - Titration power: 50% of threshold power
- Laser Lens: Volk Area Centralis (0.94x)



LEARN MORE

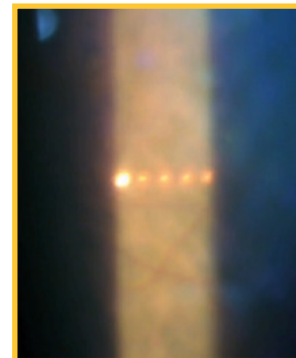


2 Titration

As each patient's retina energy-absorption is variable, individualized titration is advised to calibrate the laser energy to deliver.

A "line pattern" is used to determine the thermal threshold of each patient. The laser spots of the titration pattern are delivered successively with increased power level. The thermal threshold power level is obtained when a barely visible threshold burn is observed*. Once obtained, half of the threshold power level is used for treatment.

**While titrating, do not exceed 1.2W power. If no visible threshold happens at 1.2W, keep this power as a reference level and use half of it for the treatment (i.e. 600mW).*

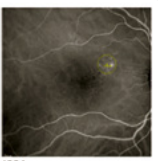
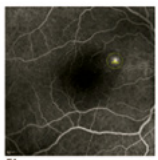


LEARN MORE



3 Treatment

Subliminal laser spots are delivered over the whole leakage area identified through ICGA, AF or FA with margins.



Select the square of the macular grid pattern to deliver the SubLiminal laser spots.

- No visible reaction must be seen during the treatment.
- There is no need to change power with different degrees of edema.
- Laser impacts must be confluent (dense treatment) and should not overlap.
- Treat large areas. Treatments will usually require between 300 and 800 spots.
- Transfoveal treatment is not recommended.



LEARN MORE



4 Follow Up

Wait at least 6 weeks after treatment to assess the results.